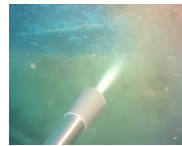


Electric High Pressure Unit

15 LPM @ 220 bar

The electric HDE220_15 high pressure unit is compatible with the CW300 long cavitation gun for removing medium fouling. The unit is built as a solid cart with 3 wheels for easy transportation and requires a 5,5KW three-phase power supply.



Specifications

Compatible with: CW300

Max. Pressure: 220 bar (3,190 psi)

Max. flow: 15 LPM (4 GPM)

Power: 5,5Kw, 400v, 50Hz

Weight: 62kg (137lbs)

Dimensions: 62x90x84cm
(24.4x35.4x33.1")

Features

- Removes medium fouling, debris and corrosion
- Heavy duty, 3 wheeled cart
- Stainless steel cover
- 3 wheels
- Readily serviceable brass suction filter
- Manual pressure valve
- Motor thermal protection